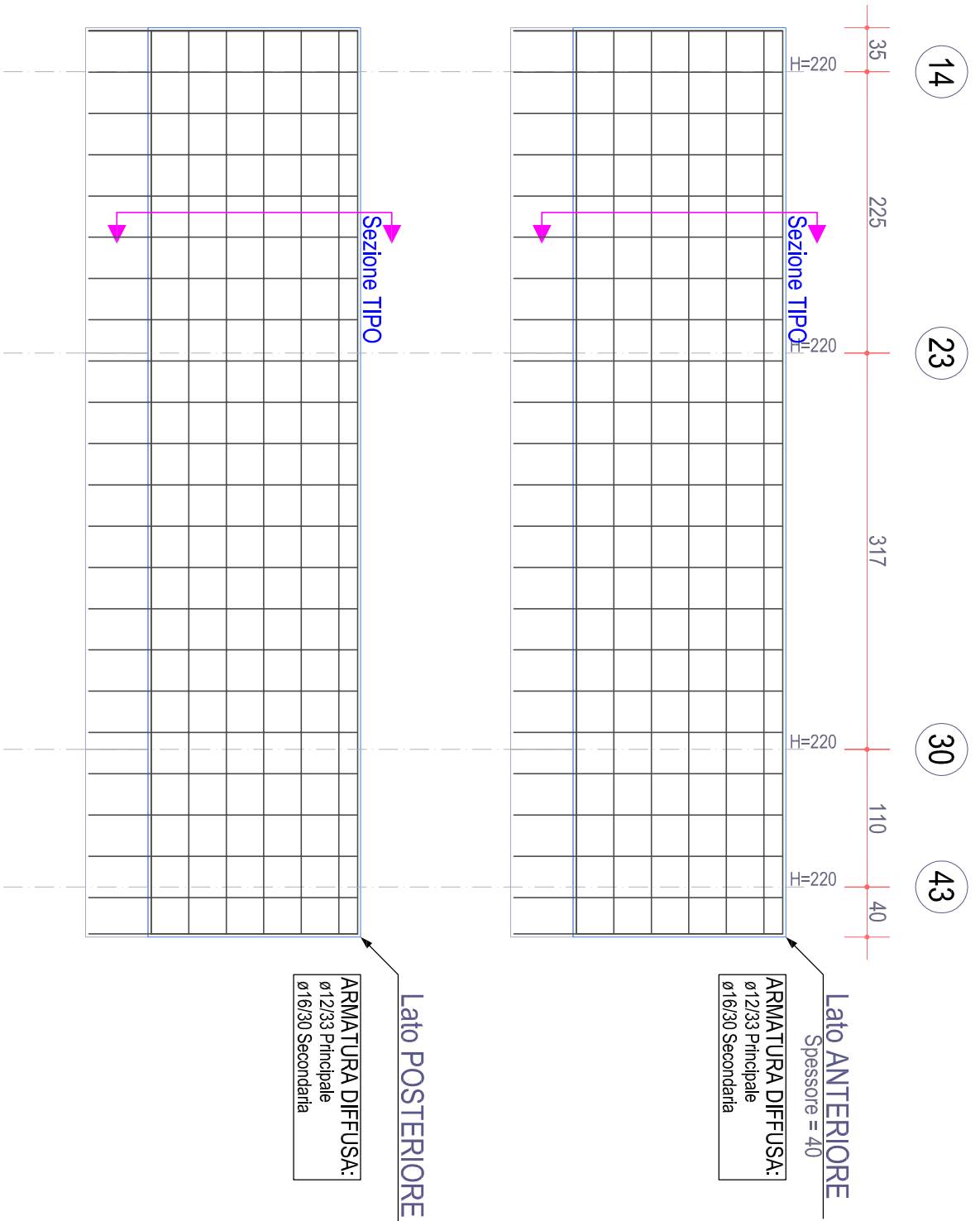


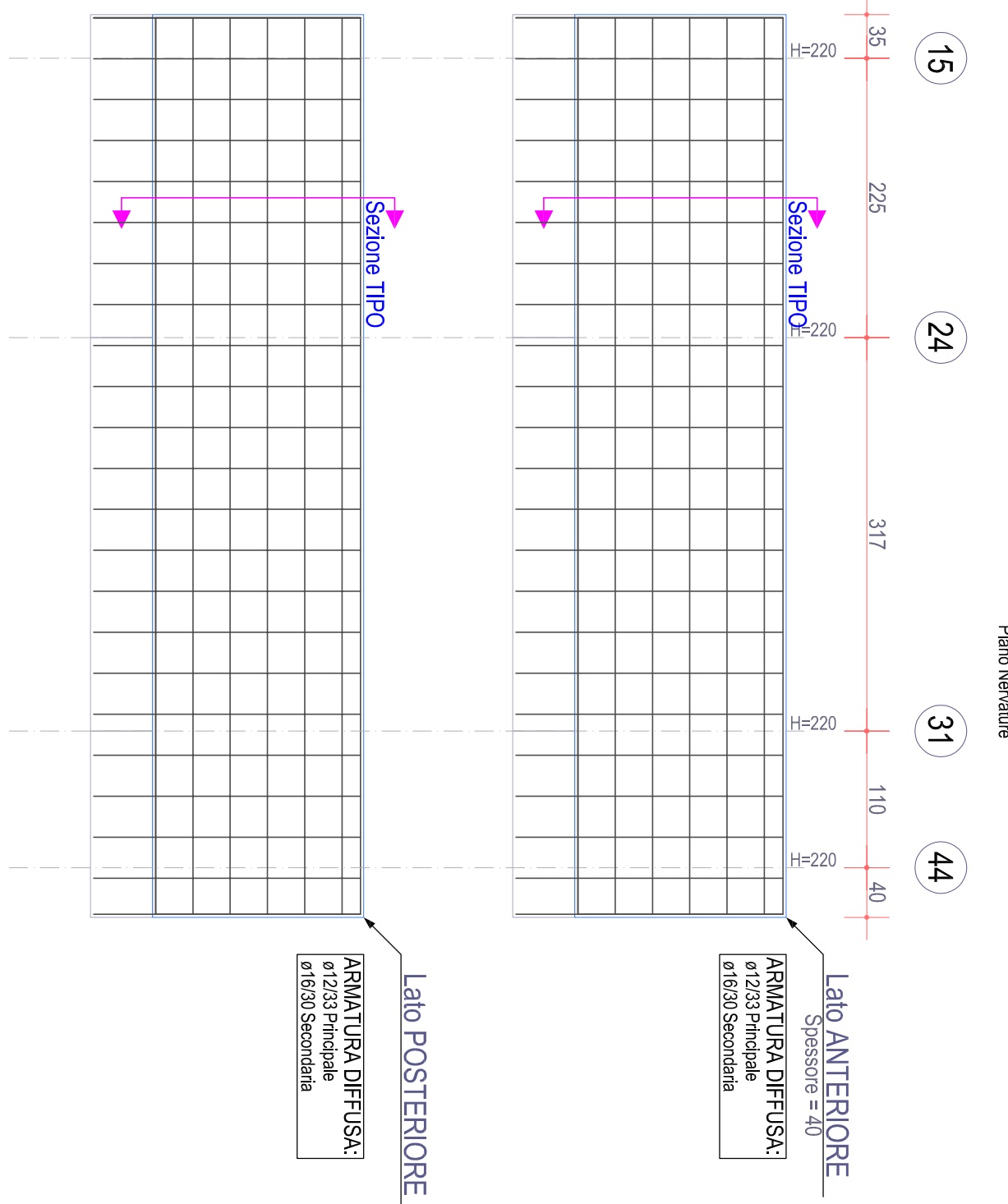
	il progettista	<p>Aut. Sanitaria, Gruppo studi tecnico-scientifico e i 14 2172 soggetti coinvolti a posteriori nell'analisi</p>
	il responsabile tecnico del procedimento e l'ufficiale del nobile (Gruppo Inter-Consorzio ANCA Capimonte)	<p>Ing. FRANCESCO SOLARI</p>

PAGINA	INIZIO	ESECUTIVI STRUTTURE BLOCCO "A", SPALLO ATTUALE PARETI PIANO NERVATURE	SCALA 1:50
ES13			DATA
AGGIORNAMENTI	1. IMPRESA	IL DIRETTORE DEI LAVORI	
REI			

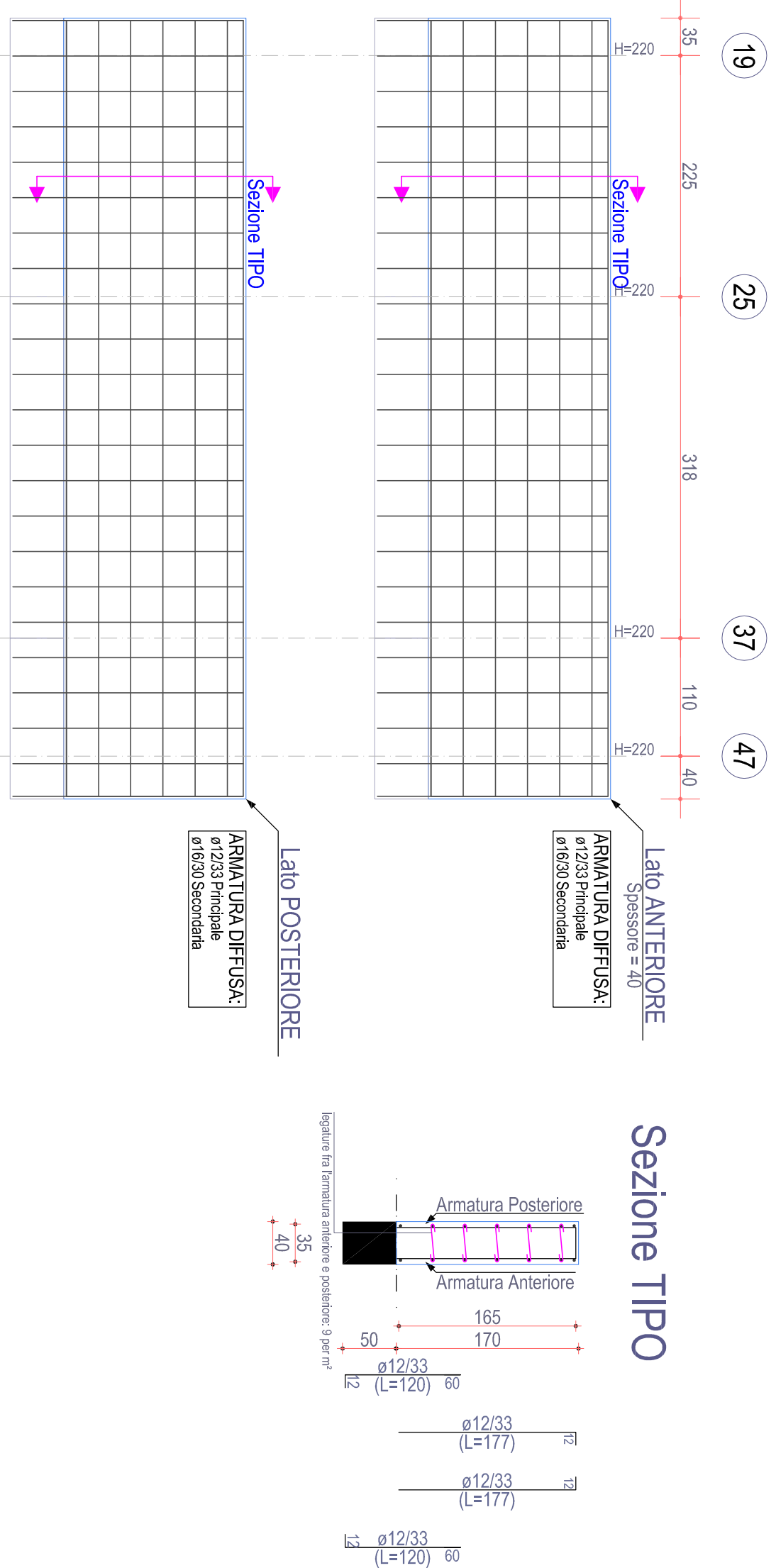
PARETE 14-23-30-43 (esistente)



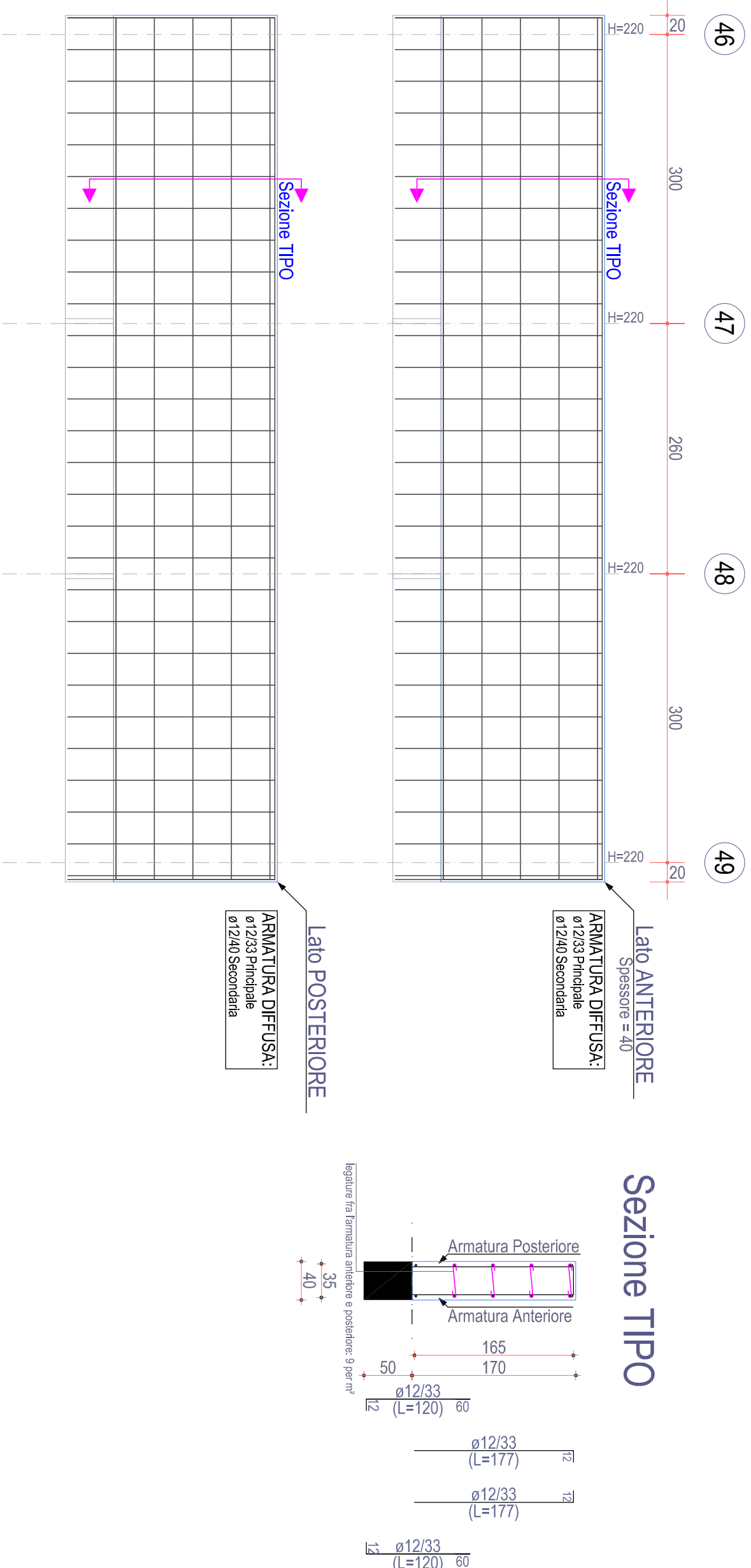
PARETE 15-24-31-44 (esistente)



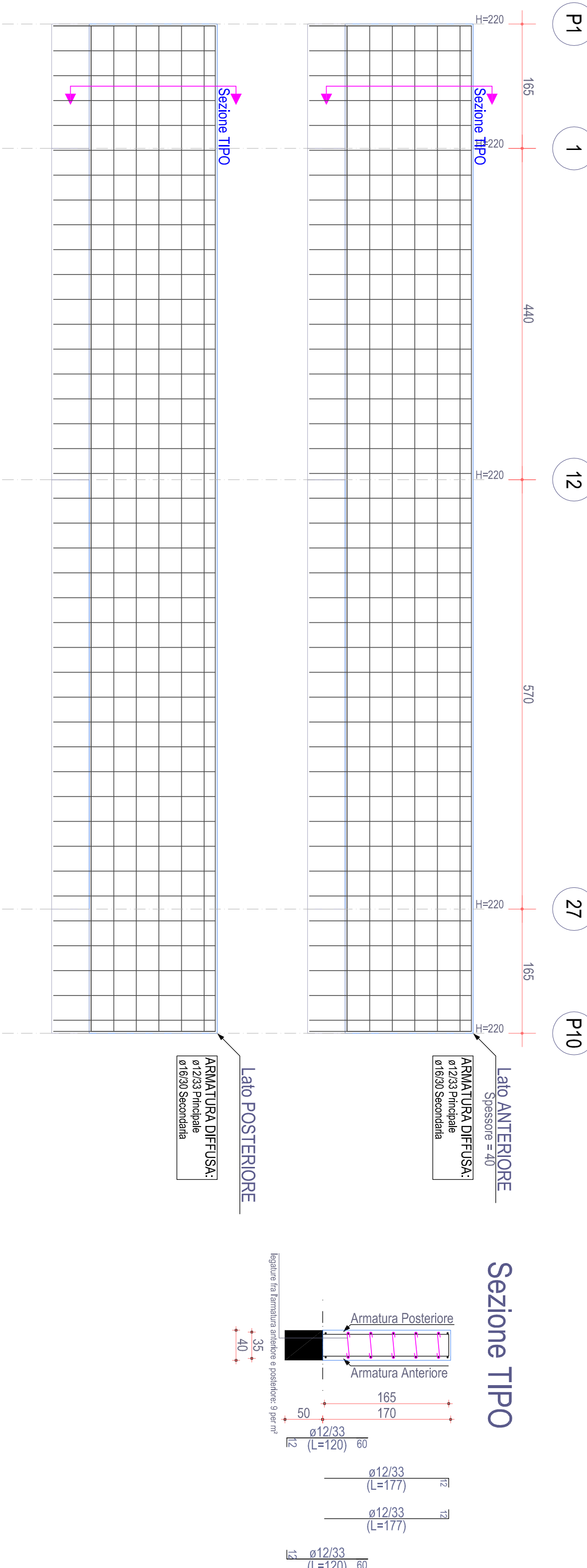
PARETE 19-25-37-47 (esistente)



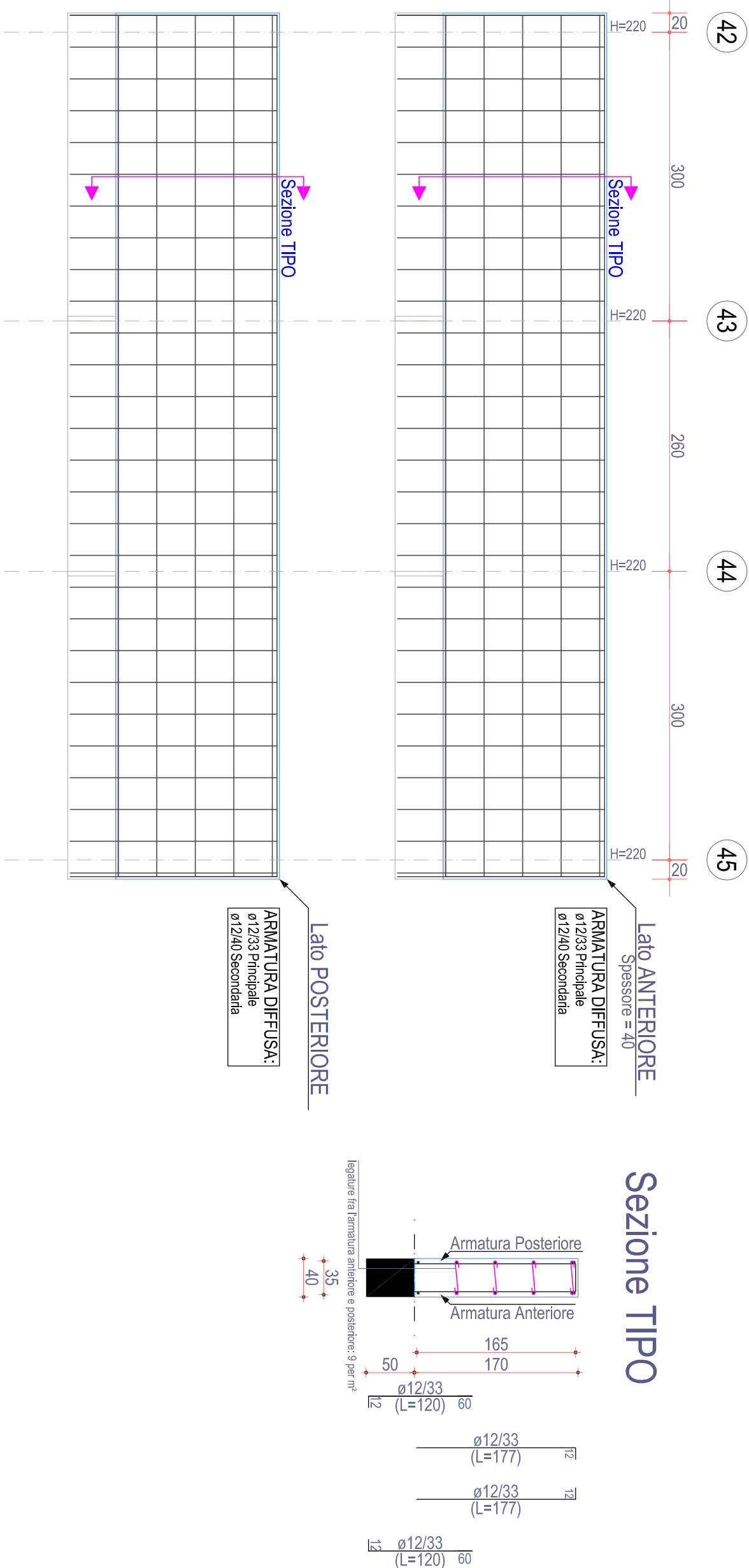
PARETE 46-47-48-49 (esistente)



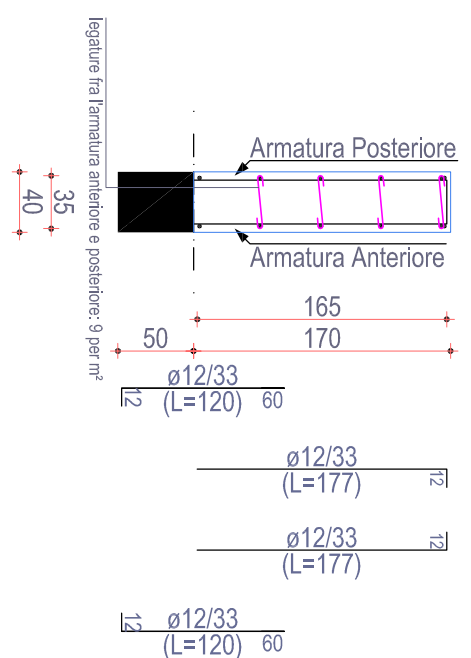
PARETE P1-1-12-27-P10 (esistente)



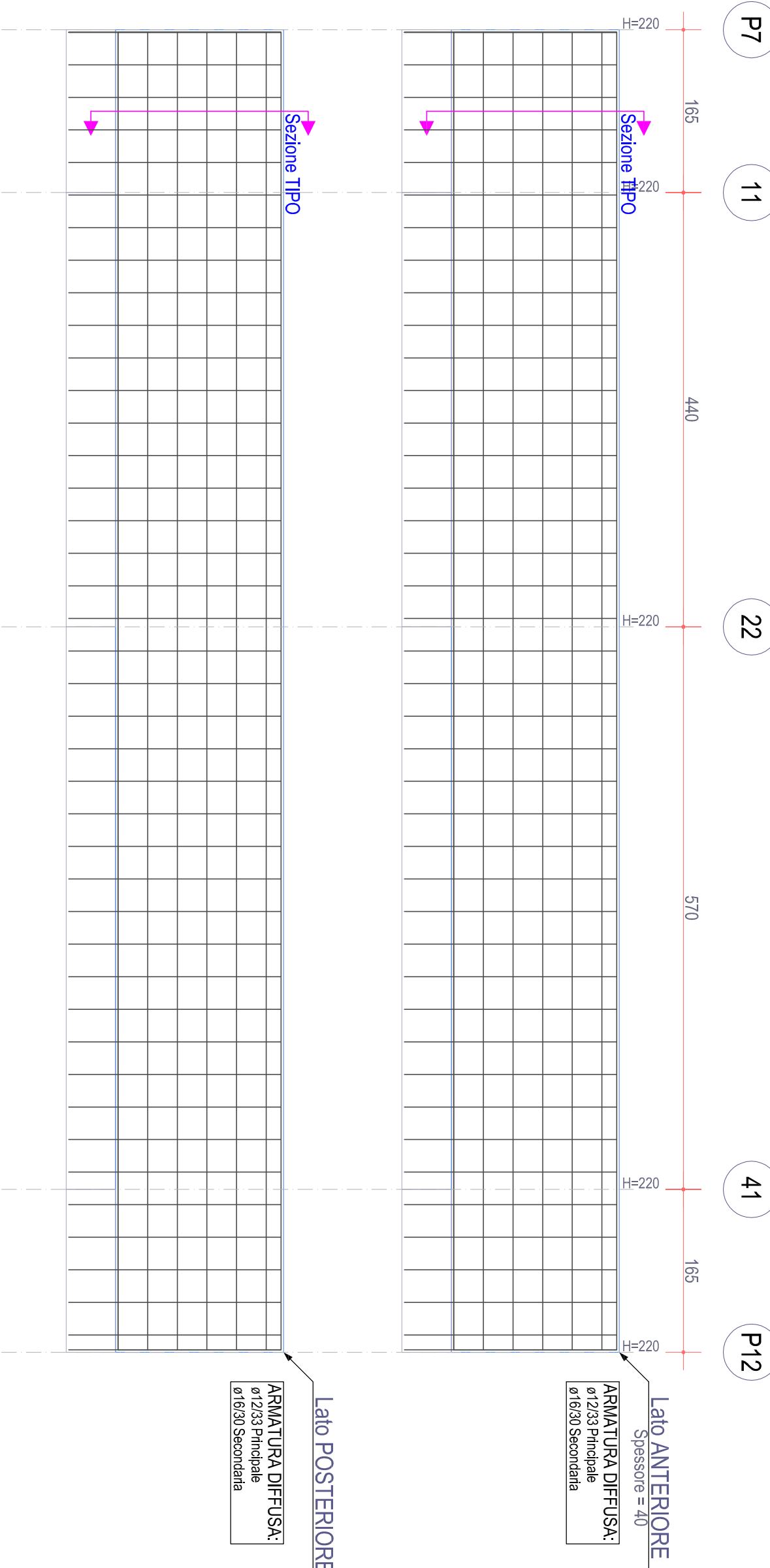
PARETE 42-43-44-45 (esistente)



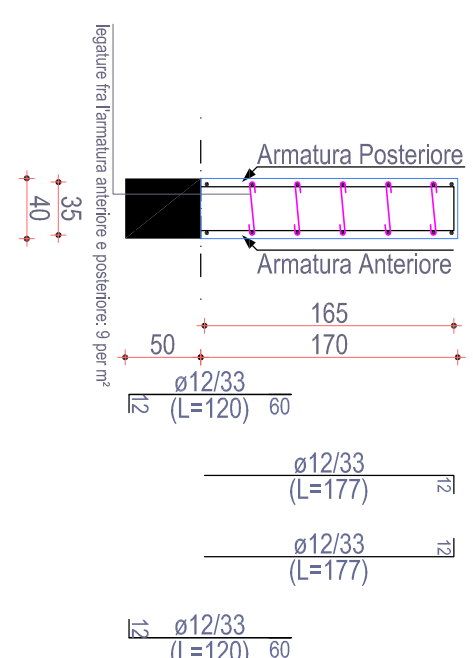
Sezione TIPO



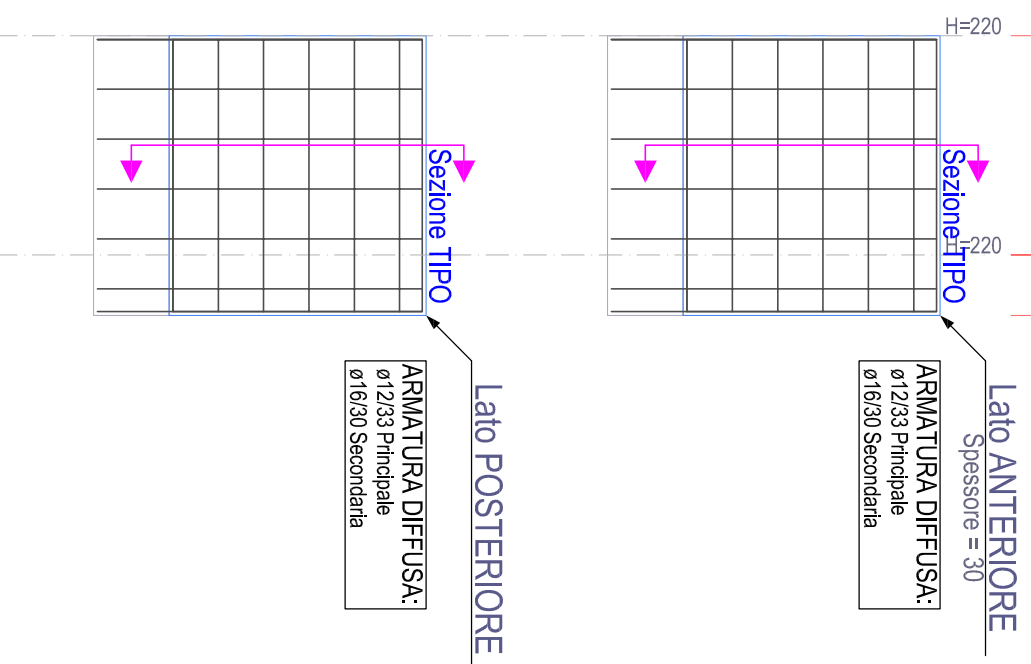
PARETE P7-11-22-41-P12 (esistente)



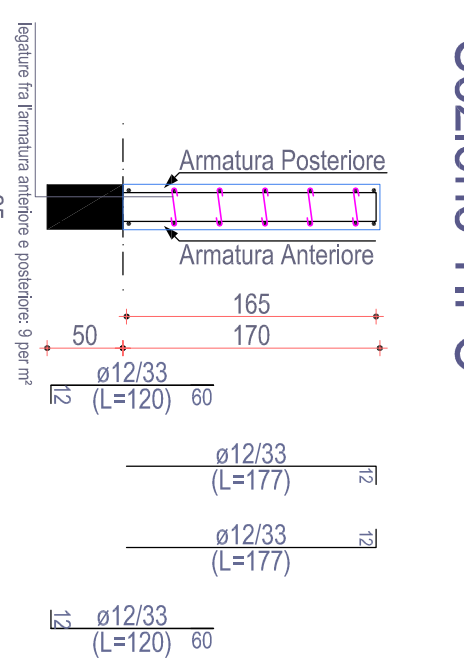
Sezione TIPO



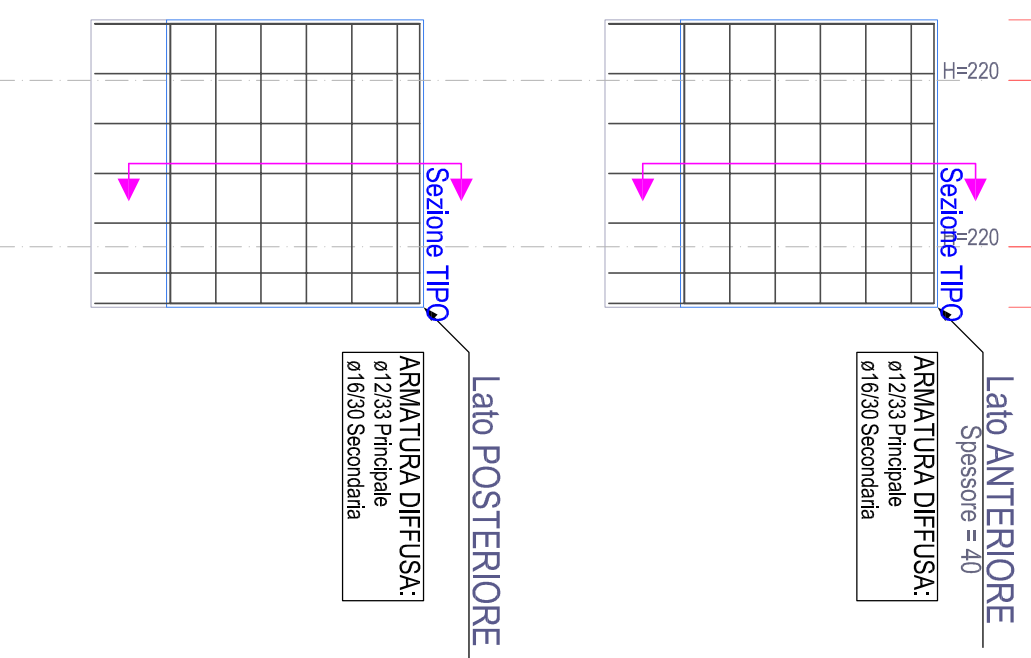
PARETE P5-P9 (esistente)



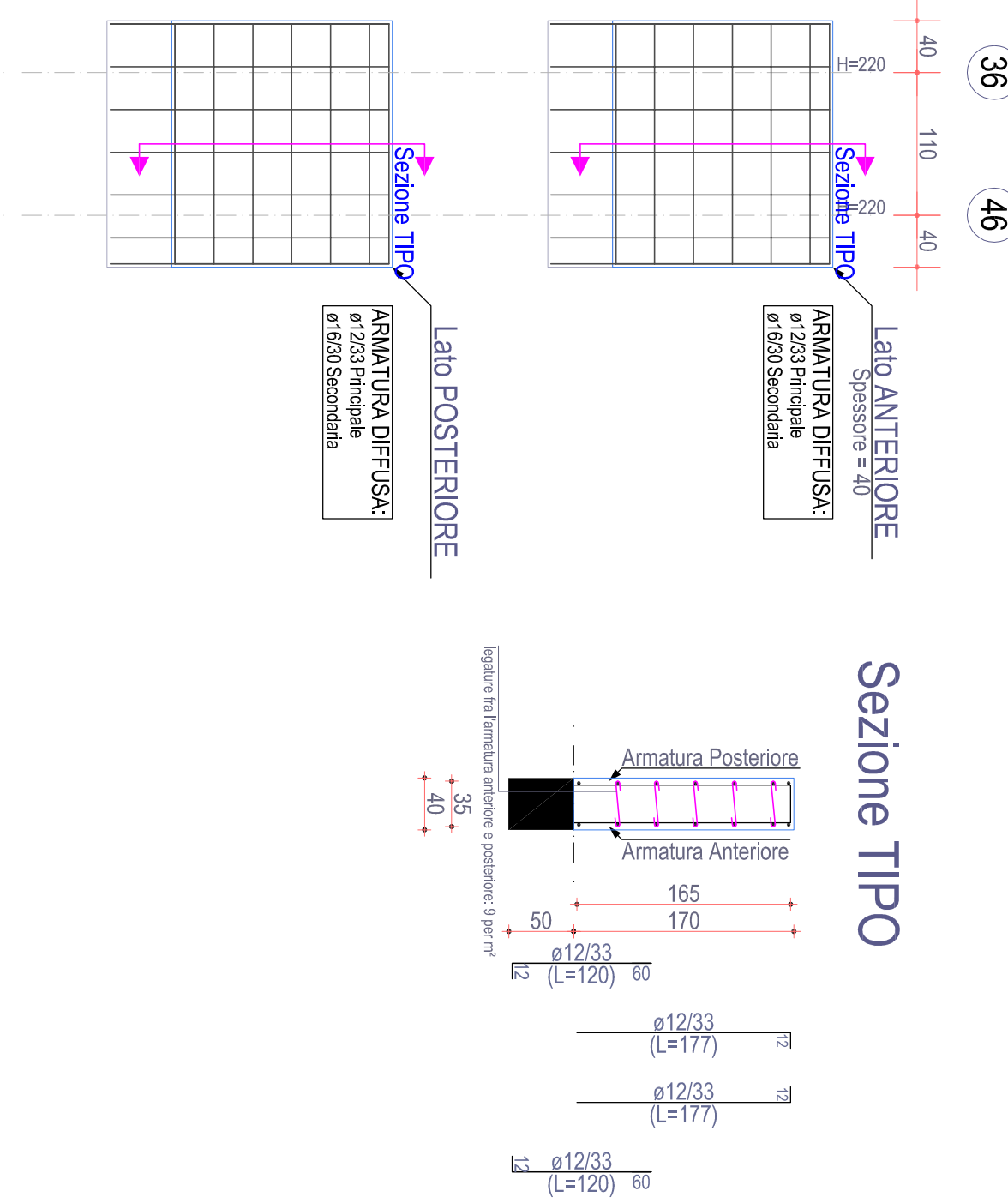
Sezione TIPO



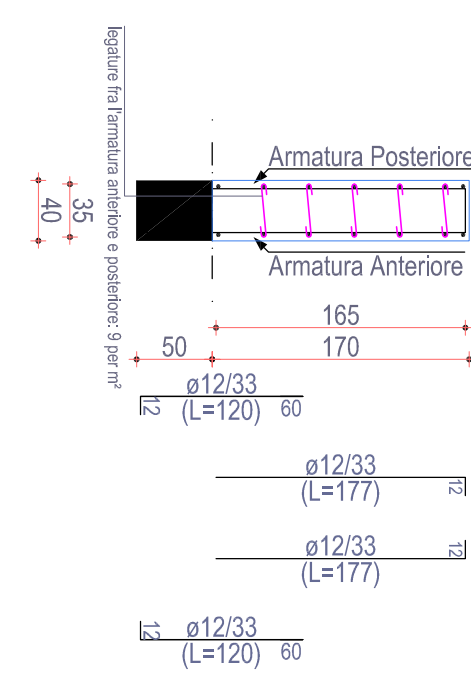
PARETE 32-45 (esistente)



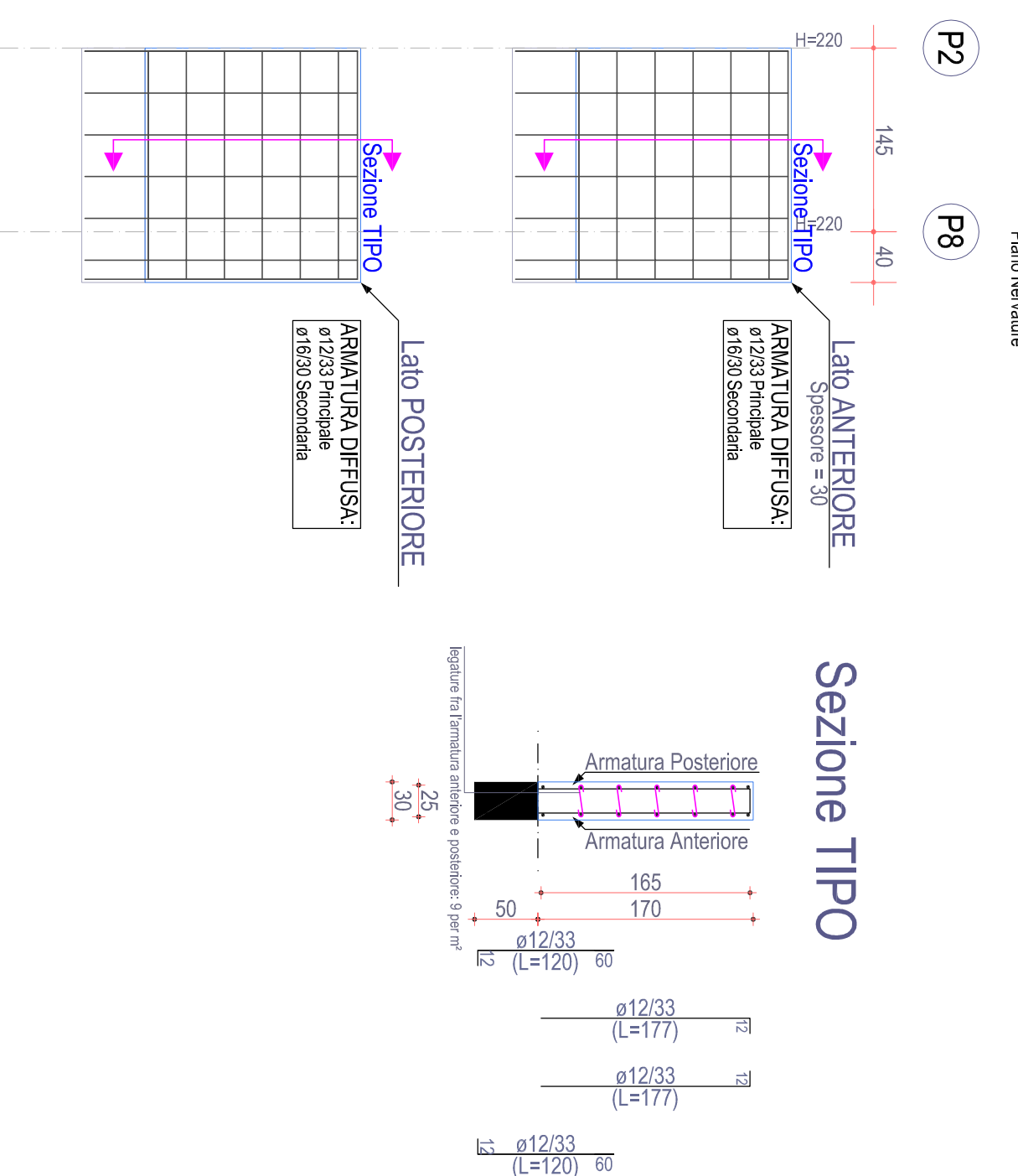
PARTE 36-46 (esistente)
Pinto Nenajun



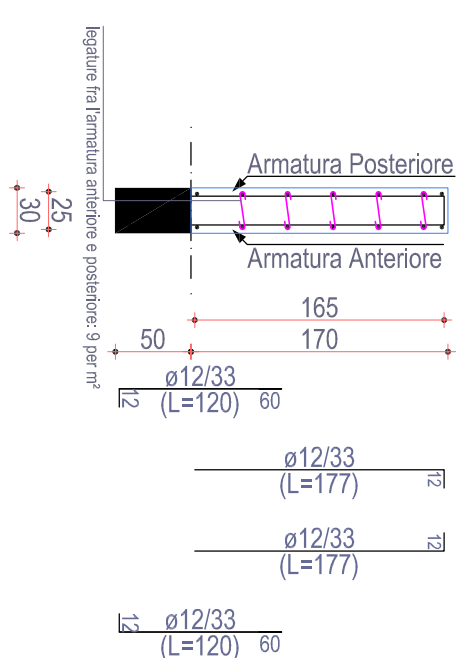
Sezione TIPC



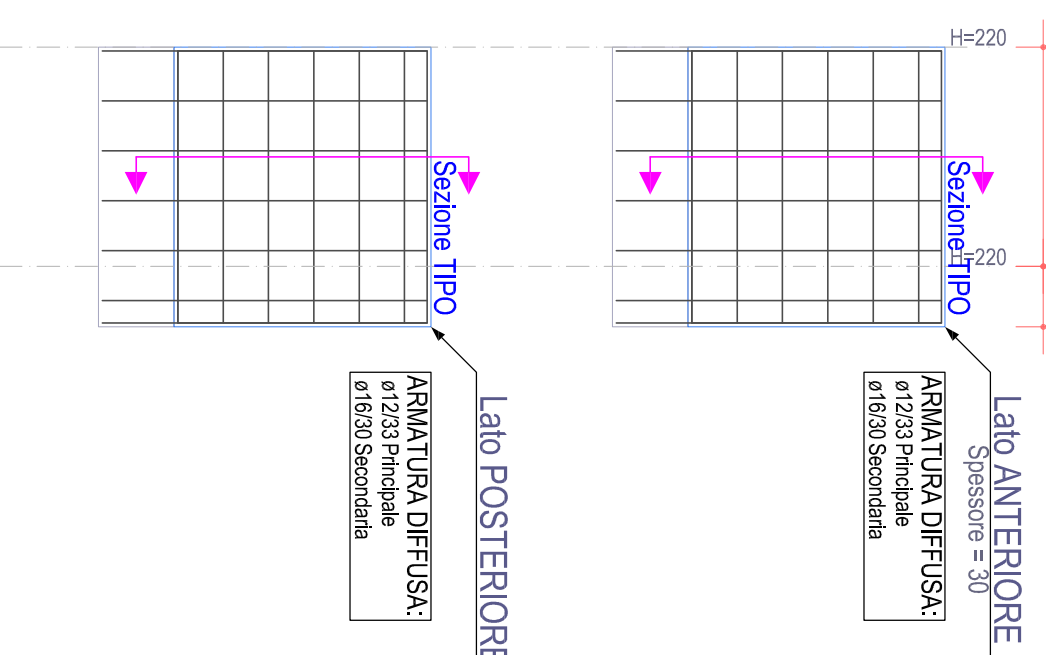
PARETE P2-P8 (esistente)



Sezione TIPC



PARETE P6-9 (esistente)



Sezione TIPO

